



Nippon DH500 Crawler Crane



Crawler Crane

Make: Nippon
 Model: DH500
 Capacity: 50T
 Boom: 25m

NO:	BOOM LENGTH And ANGLE	RADIUS (METER)	RADIUS (METER)	RATED LOAD (TON)
MAINHOST	25M 42°	20 M	4.2T DYNAMIC	4.2 T
MAINHOST	25M 51°	12 M	6.8T STATIC	6T

A GUERRINI • 083 443 7090 • adrian@gmcdiving.co.za • NHD CIVIL ENG
 R BOWER • 082 601 0098 • robb@gmcdiving.co.za • B-TECH CIVIL ENG
 Ck No: 1995/053307/23 • Vat Reg: 4430164071



www.guerrinimarineconstruction.com

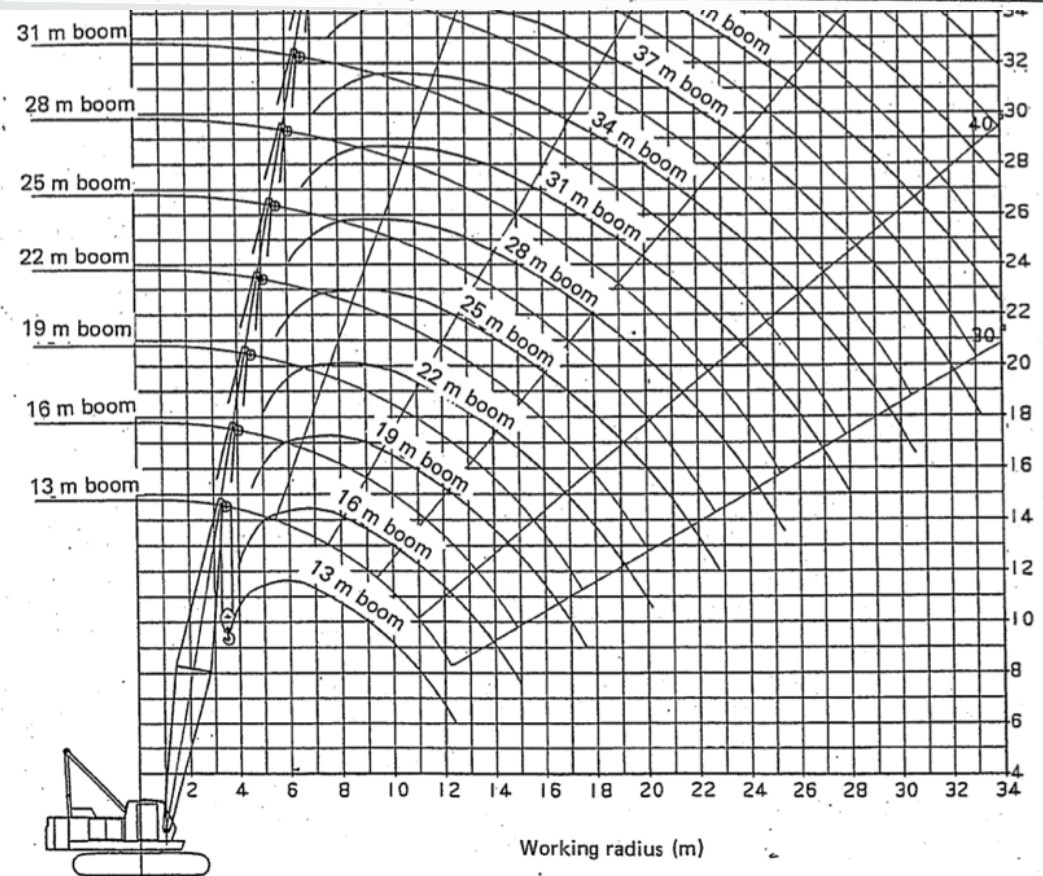
<https://www.facebook.com/GMCDiving>





Nippon DH500 Crawler Crane

Working radius (m)	Boom length													Working radius (m)	
	13 m	16 m	19 m	22 m	25 m	28 m	31 m	34 m	37 m	40 m	43 m	46 m	49 m		52 m
3.5	50.00														3.5
3.8	50.00														3.8
4	47.00	46.40 x4.03 m													4
4.5	39.60	39.50	38.80 x4.55 m												4.5
5	33.30	33.20	33.10	32.40 x5.07 m											5
5.5	28.70	28.60	28.50	28.45	27.70 x5.59 m										5.5
6	25.20	25.10	25.00	24.95	24.85	24.10 x6.11 m	21.25 x6.63 m								6
7	20.20	20.10	20.00	19.90	19.80	19.75	19.65	19.00 x7.15 m	17.10 x7.67 m						7
8	16.80	16.70	16.60	16.50	16.40	16.35	16.25	16.15	16.10	15.00 x8.19 m	13.00 x8.71 m				8
9	14.30	14.20	14.10	14.05	13.95	13.90	13.75	13.70	13.65	13.55	12.85	12.00 x9.23 m	10.90 x9.76 m		9
10	12.50	12.30	12.20	12.20	12.10	12.00	11.90	11.85	11.75	11.65	11.60	11.50	10.90	8.45 x10.28 m	10
12	9.80	9.70	9.60	9.55	9.45	9.40	9.30	9.20	9.15	9.00	8.95	8.85	8.75	8.45	12
14	9.40 x12.38 m	8.00	7.80	7.80	7.70	7.60	7.50	7.45	7.35	7.25	7.20	7.05	6.95	6.90	14
16		7.30 x14.98 m	6.60	6.55	6.40	6.35	6.25	6.15	6.10	6.00	5.90	5.80	5.65	5.60	16
18			5.80 x17.58 m	5.60	5.45	5.40	5.30	5.20	5.15	5.00	4.95	4.85	4.70	4.65	18
20				4.85	4.70	4.65	4.55	4.45	4.40	4.30	4.20	4.10	4.00	3.90	20
22				4.75 x20.18 m	4.10	4.05	3.95	3.85	3.80	3.70	3.60	3.50	3.40	3.30	22
24					3.90 x22.78 m	3.55	3.45	3.35	3.30	3.20	3.10	3.00	2.90	2.80	24
26						3.25 x25.37 m	3.05	2.95	2.90	2.75	2.70	2.55	2.45	2.35	26
28							2.70 x27.97 m	2.60	2.55	2.40	2.35	2.20	2.10	2.00	28
30								2.30	2.25	2.15	2.05	1.90	1.80	1.70	30
32								2.25 x30.57 m	1.95	1.85	1.75	1.60	1.50	1.40	32
34									1.85 x33.17 m	1.60	1.50	1.30	1.20	1.10	34



A GUERRINI • 083 443 7090 • adrian@gmcdiving.co.za • NHD CIVIL ENG
 R BOWER • 082 601 0098 • robb@gmcdiving.co.za • B-TECH CIVIL ENG
 Ck No: 1995/053307/23 • Vat Reg: 4430164071



www.guerrinimarineconstruction.com

<https://www.facebook.com/GMCDiving>

