

Guerrini Marine Construction



Civil, Diving & Marine Engineering Specialists

COMPANY PROFILE

Atlas Gardens
29 Sycamore Crescent
PO Box 2693
Durbanville
7550



T: +27 (21) 556 4858
F: +27 (21) 557 7783
info@gmcdiving.co.za
www.guerrinimarineconstruction.com

DIVING AND MARINE CIVIL ENGINEERING CONTRACTORS

Guerrini Marine Construction was established in 1995. While primarily servicing the Civil Engineering industry we have over the years become a reconized player in the diving,salvage and marine services sector.

GMC has performed work all over South Africa as well as Sub Saharan Africa in countries which include Angola, Congo, Mozambique and Lesotho.

We maintain a Quality and Management Assurance policy which is governed and recognized by our ISO 9001 - DNV requirements.

GMC offers a broad base services which include:

IN-SHORE DIVING

- Fibre optic shore end installations
- Underwater demolition
- Underwater cutting & welding
- Inspections & surveys
- Marine support
- Underwater Construction
- Dam maintenance
- Underwater concreting

CIVIL AND MARINE CONSTRUCTION

- Bridges
- Slipways
- Tidal Pools
- Jetty Construction
- Scour Protection
- Pipe Line installations
- Marine Piling
- Strategic Demolition
- Specialised Steel Structure Erection
- Mechanical Repairs and Installations
- Gabions and Retaining Walls

MARINE SERVICES

- Work boat Strandloper 15 ton bollard Pull
- Barge with capacity in 150 tons
- OPL deliveries from Cape Town
- Towing and lashup services
- Salvage
- Dredging

SHIPPING SERVICES SERVICES

- Sealing and blanking
- General marine maintenance and cleaning
- CCTV UWILD surveys
- VP propeller blade changes
- Propeller polishing
- Cofferdams
- Dry docking



-CONTENTS-

Over the period of the growth and development of our company we have been involved in and completed various engineering projects including but not limited to:

1. Servicing of the offshore Oil Platforms
2. Marine & Diving Services
3. Slipways, Tidal Pools and Boat Ramps
4. Quay Walls and Docking Facilities
5. Bridge Construction
6. Dredging
7. Salvage
8. Breakwater and Revetment Construction
9. Demolition Works
10. Marine Foundations & Piling
11. Safety, Health, Environment and Quality Management
12. Diving Portfolio
13. Directors and Personnel
14. Plant, Vehicle and Equipment Inventory
15. Testimonials

SERVICING OF THE OFFSHORE OIL PLATFORMS



In Service Inspection & Non Destructive Testing of Blowdown Element
ZAFF2 ZATCH FIELD
2013
Ponte Noir CONGO



2013 In Service Inspection & Non Destructive Testing of Blowdown Element Pre-Inspection Cleaning, 3.2
Inspection and In-Service Repairs to the Blowdown Elements
Client: ENI Congo

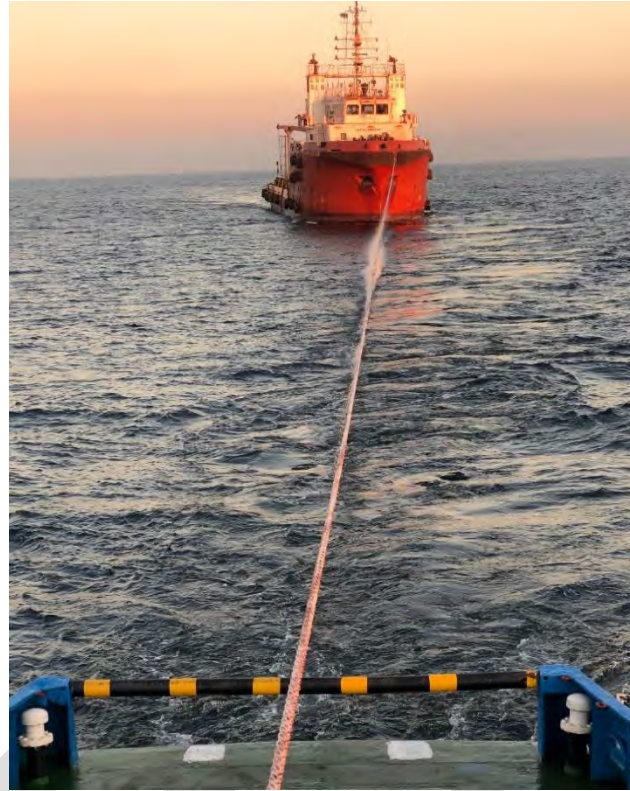


In Service Inspection & Non Destructive Testing of Blowdown Element
ZAFF2 ZATCH FIELD
2013
Ponte Noir CONGO

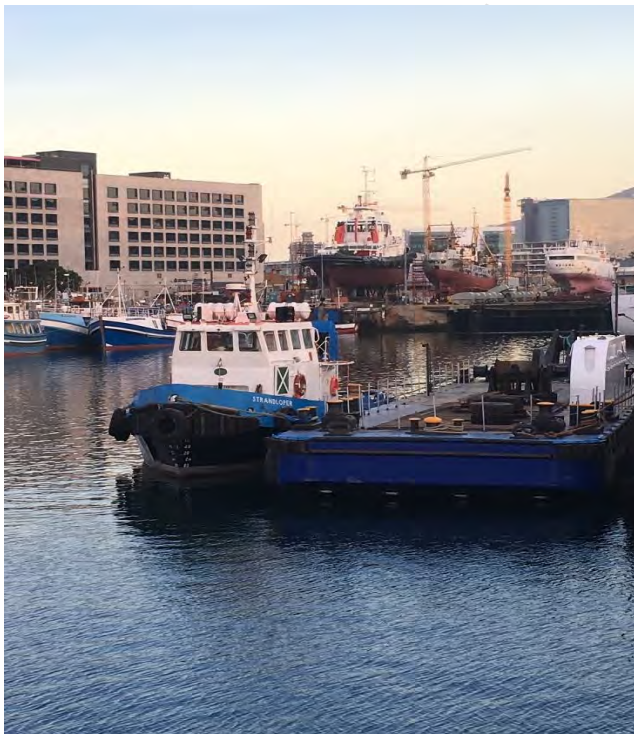


MARINE AND DIVING SERVICES

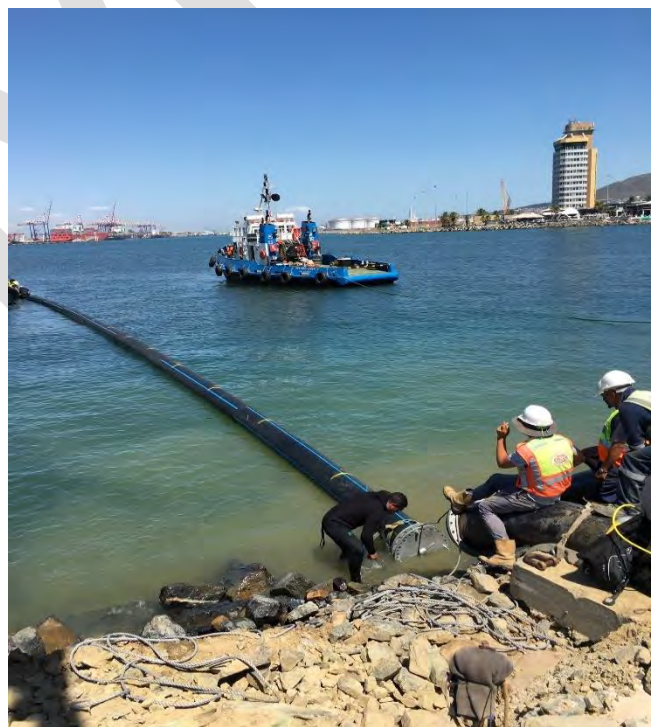
2003	Underwater concrete roundhead reconstruction - Kalk Bay Harbour Client: Department Public Works Consulting Engineer: Liebenberg & Stander – Gary Mostert
2008	Sub Marine Sealing walls - Convention Center Client: Cape Town Convention Center
2012	Technical Survey and concrete analysis and reporting Installation of Temporary Stop log Gates and sealing Matala Dam - Angola Client: SNC Lavalin
2012	Flipper Delta 3-Point Mooring System – Angoche Mozambique Client: Kenmare Moma mine Mozambique
2019	Work Boat Support
2019	Towing Services
2020	Dry Docking - Shipping Lines
2020	Uwild - Mersk Shipping
2020	Rope Cutting
2020	Underwater Welding



Tow Alexi from Saldanha to Cape Town



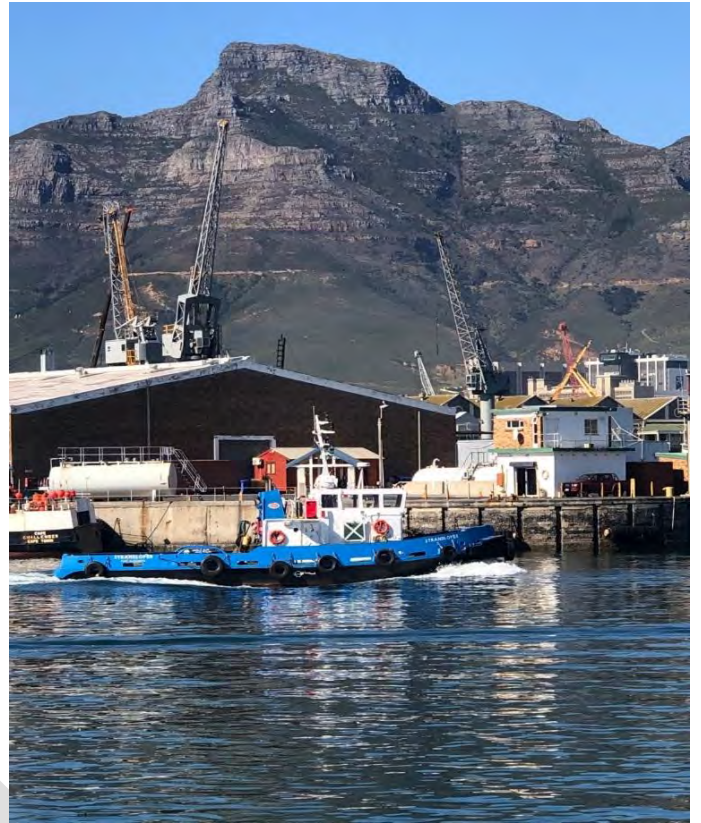
Strandloper and barge Franco



Dive support desalination pipe V&A



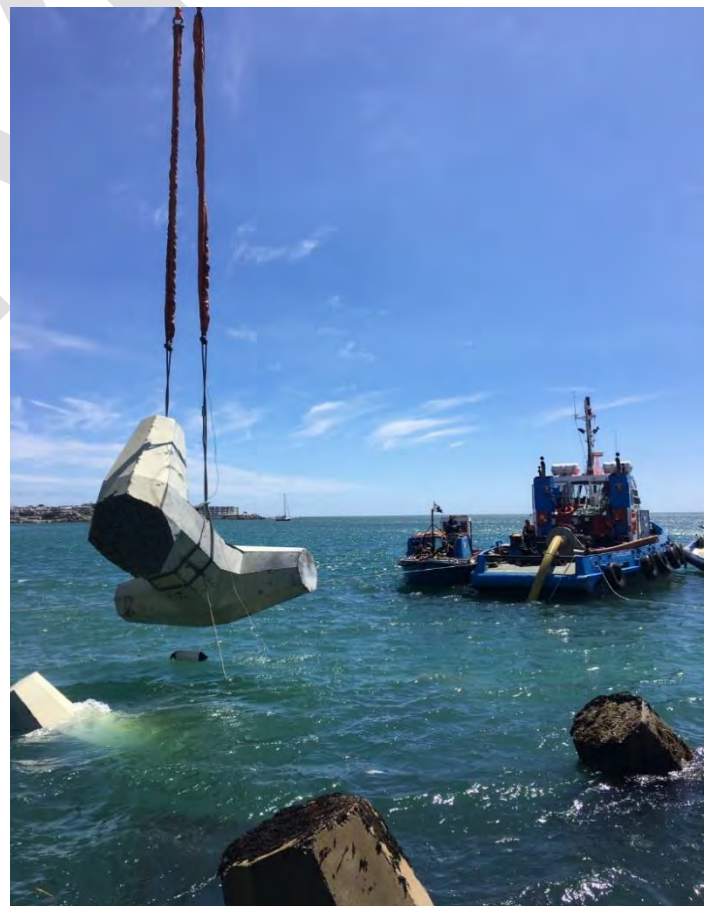
Tow salvaged trawler to quay



Strandloper returning from OPL



Dive Support for construction of trench



Dive Support installation of 160 x 25 ton Dolos



Dive Support and Underwater Construction Activities
2012
MOMA – MOZAMBIQUE



Engineering Investigation Reporting of Concrete AAR
2012
MATALA DAM – LUBANGO - ANGOLA



Dive inspection Rig Endeavour Saldanha



Connecting cables and shackles for Gas Pipe Saldanha

GMMC

SLIPWAYS, TIDAL POOLS AND BOAT RAMPS

2003	Hout Bay Slipway Civil reconstruction, mechanical maintenance and repairs Gordon's Bay Slipway Civil reconstruction, mechanical maintenance and repairs Lamberts bay Slipway Civil reconstruction, mechanical maintenance and repairs Hermanus Slipway Civil reconstruction, mechanical maintenance and repairs	
2005	Construction Benguela Cove boatramp	Benguela Cove Investments
2008	Construction Witsands Boat ramp - Kommetjie	City of Cape Town
2010	Houtbay Slipway	NSRI
2011	Standfontein Boatramp	NSRI
2012	Durban NSRI Slipway	TRANSNET
2013	Lamberts Bay & Hermanus	DPW
2015	Doringbaai Slipway	Department of Rural Development & Land Reform
2019	Gansbaai and Arnistan Slipway	Coega
2020	Slipway and Marine Infrastructure Repairs	Coega



Doringbaai Slipway
(2015 – 2016)



Dismanteling and Reconstruction of NSRI Launching Facility, Slipway System and Winche
2013
NSRI – DURBAN

2012 - 2013
LAMBERTS BAY



Maintenance and Repairs to Slipway and Mechanical Installations



2019 Arniston Slipway



Rock scour placing barge Island View



Dredging Island View to new design levels



QUAY WALLS AND DOCKING FACILITIES

2002	Reconstruction of damaged quay Consulting Engineer	Cape Town Harbour PRDW - Gus Hojem
2006	Warf Construction Client Consulting Engineer	Mossel Bay Viking Fishing WML Coastal Engineering
2011	Boat Ramp Bird Island Client Consulting Engineer	Port Elizabeth San Parks Roberts
2014	Stabalisation of berth 5 Client Consulting Engineer	Durban TNPA Shane Perumal

G M C



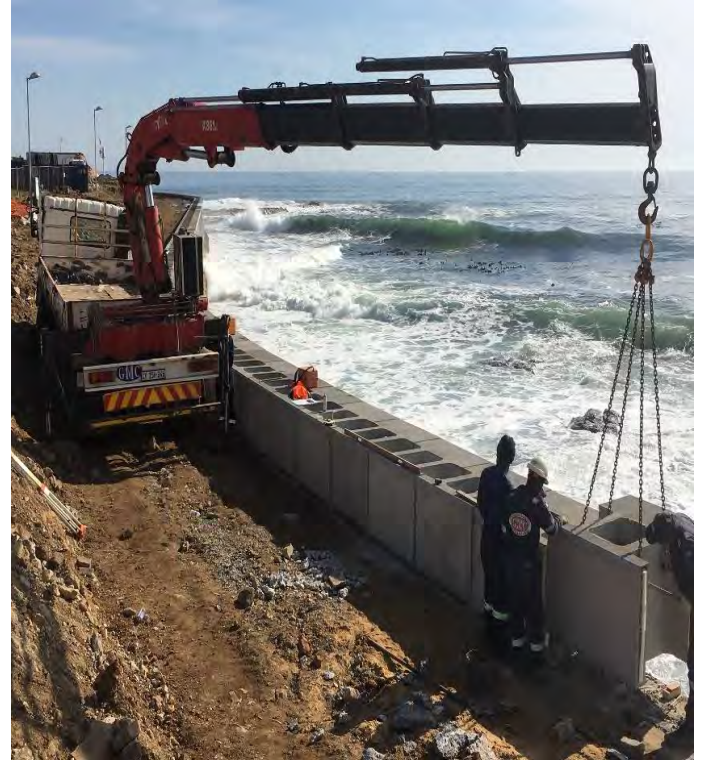
Dismantling and Reconstruction of Damaged Concrete Quay Wall
2002
PORT OF CAPE TOWN



Construction of Docking Landing and Launching Facilities'
2010
BIRD ISLAND- EASTERN CAPE



2km Sea Wall Mouille Point



Installing pre cast wave wall capping

BRIDGE CONSTRUCTION

2008	Design & Construction Suspension Bridge Pweto DRC Client Consulting Engineer	Anvil Mining Congo Manfred Kloos
2010	Suspension Footbridge Client Consulting Engineer	Lesotho Ministry of Roads and Transport SSI – Petermaritzberg
2017	Tra Tra Bridge 25ton Client Consulting Engineer	Wupperthal Department of Rural Affairs
2019	Tra Tra Bridge 45ton Client Consulting Engineer	Wupperthal Department of Rural Affairs



Pedestrian Footbridge
2010
AMAFUTHO – QACHAS NEK - LESOTHO



Water Reticulation Project – Rural Development
2008
PWETO - DEMOCRATIC REPUBLIC OF CONGO



25 Ton Bridge Wupperthal



45 Ton Bridge Wupperthal

Dredging

Guerrini Marine Construction provides dredging services in Cape Town South Africa and is experienced in:

- Pre-dredge, intermediate and post dredge bathymetric surveys
- Maintenance dredging of harbour basin;
- Mechanical removal of loose rocks, accessible at low-tide in harbour basin;
- Creation of a pump dredged material stockpile using geotextile bags
- Disposal of pump dredged material
- Maintenance dredging
- Survey and cross-section plots for pre- and post-nourishment profiles



30 Tonne long reach excavator on Barge Franco with DOP pump Power Pack Dredging in lamberts Bay.

Barge Franco with crane, DOP pump and power pack in Gansbaai Harbour.



Removal of dredged material in Stillbaai using a 30 tonne excavator.

SALVAGE

- 2007 Salvage of Sunken Fishing Trawlers - Port of Cape Town
Duration 12 months
Client TRANSNET – National Ports Authority
- 2007 Salvage of Sunken Fishing Trawlers – Port of Cape Town
Client Transnet
Reference Derek Visser
- 2017 Salvage of 30 fishing trawlers – Hout Bay, Saldanha Bay, Laai Plek & Lambertsbay
Client Coega
Reference Gus Hojen
- 2019 Salvage of 40 ton Ship Hatch – 400 Nm off Cape town and tow to P.E
Client Private
Reference Godfrey Needham



Refloating of Sunken Trawlers

2007

PORT OF CAPE TOWN



**Magoea
Muizenberg**



**Leopard 39
Dassen Island**



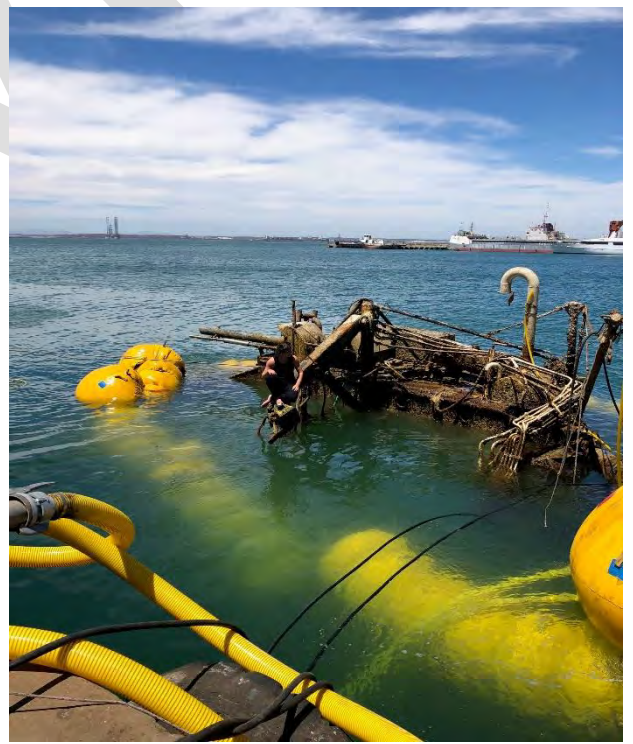
Towing 40 ton hatch close to Port Elizabeth



Hatch arriving in Port Elizabeth



Salvaged trawler Brandaris Saldanha



Salvaging Trawler Mercury

BREAKWATER AND REVETMENT CONSTRUCTION
DEMOLITION WORKS

2011	Sierra Wall - Simonstown Naval Base - Removal of 2000 tons concrete from seabed Client Consulting Engineer Contact	SADF Jeffarres & Green Tim Davidson 021 5320950
2012	Sampling Plant - Saldanha Bay Client Engineers Client Contact	TRANSNET HATCH Wessel Pretorius
2016	Grain Elevator - Saldanha Bay Client Engineers Client Contact	TRANSNET TNPA Adriaan Stander



Demolition of Sierra Wall
Cutting the concrete wall into sections and floating away to be demolished
2012
SIMONSTOWN



Demolition of TRANSNET Iron Ore Sampling Plant
30m Steel Structure
2013



SALDANHA BAY

PILING AND MARINE FOUNDATIONS

Construction of NSRI Slipway 2012 TRANSNET Durban



Foundation Piling NSRI Launching Facility 2013 NSRI – DURBAN





GMC provides underwater construction, topside inspection, repair, maintenance and service to the marine and offshore oil/gas industry. We are accredited with Lloyds to carry out IWILD surveys, pumping, air lifting and other dive related activities.



Since foundation, GMC have been working all around South Africa as well as African countries (Malawi, Democratic republic of Congo Mozambique, Lesotho) where we successfully completed various underwater and topside projects. Client reports and testimonies are available on request.

GMC teams are available to be deployed for all your needs with the objectives of not only to provide and ensure quality service delivery to your organization but also to promote sustainability and continuity for the improvement of your business.



SAFETY, HEALTH, ENVIRONMENT AND QUALITY MANAGEMENT

GMC SHE-Q department with a qualified and dedicated SHE-Q manager was founded in 2008 when we promoted the importance of safeguarding life, property and the environment of ourselves, our personnel, our clients and stakeholders.

Taking into account that our modern business operates in markets characterized by growing awareness of wider sustainability, such that our employees safety, occupational health and hazard prevention is paramount to achieve quality service delivery.

Safety, occupational health performance and quality service delivery credentials are crucial in our organization's stakeholders' loyalty.

Safety and Health regulations are becoming far more demanding and so is the enforcement; Reducing hazards and adopting prevention mechanism more efficiently have proven to reduce cost and boost profits; Banks, stock Exchanges and insurers are taking a closer look at the hazards and risks of the companies seeking credits, investment or insurances.

Today, Safety and Health credibility is becoming a factor in national and international competitiveness. Implementation of Occupational Health and Safety Management Systems can facilitate progress towards increased competitiveness, leading to increased profit, more efficient processes, reduce costs, reduce liabilities and improve our company's image.

GMC prides ourselves as being affluent and and fully capable in the HSE sector against our largest competitors.



DIVING PORTFOLIO

- Underwater structure cleaning using underwater cutting brushes or High-pressure jet gun.
- Underwater Pipe line installation, repair of both HDPE and Steel Pipelines used for petrochemical and effluents as per client methods and requirements.
- Lloyds accredited UWILD Surveys.
- Pumping with 6", 8" and 12' in-house pumps.
- Airlifting and dredging services.
- Installation of HDPE pipelines of up to 900mm by the surface float method.
- Diving support for the installation of steel pipelines by the bottom pull method.
- Maintenance of existing pipelines including scour protection and free span correction.
- Installation and replacement of diffuser nozzles.
- General inspection and repair to cathodic protection.
- Salvaging and recovering of all sink equipment and materials
- The underwater sediment removal using various techniques, as well as underwater structure and difficult access sites.
- Rapid response
- Ship Dry Docking.
- In-Water Surveys
- Propeller Shining
- Sea Chest Blanking Off and Cleaning
- Pintle Readings and Shaft Wear Down Readings

GMC is currently compliant with Det Norske Veritas (DNV) in terms **ISO 9001/2008** quality management system and to the International Maritime Contractor Association (**IMCA**) for the commercial diving operation.

GMC is accredited with Lloyds and is an approved provider of UWILD SURVEYS.



UNDERWATER CLEANING USING CUTTING BRUSH WITH HYDRAULIC POWER PACK



UNDERWATER REPAIRS AND PIPELINE INSTALLATION

GMC has various experiences in the installation and repair of both HDPE and Steel Pipelines used for petrochemical and effluents.

We have developed the capability of undertaking HDPE welding at sea, thereby eliminating the need for compression type fittings. We have also developed purpose-built installation equipment to assist with joining pipe strings and installing compression fittings under water.



RAPID RESPONSE TEAMS

GMC maintains a rapid response team within his areas of operation 24/7 to assist with emergencies. Dedicated 4x4 Vehicles as well as a full inventory of pumps, patching gear, towing gear and rigging gear is available normally available from our Base. An 8M rubber duck equipped with dive spread is always made available to accommodate the needs as per client specifications.

Our 24/7 response to marine, oil and gas industry comprises of: Patching and Sealing; Pumping; Pollution Response; Engineering Assistance; Response by Sea, Air or Land; Damage Assessment; Class Survey, Video and Photography; on Destructive Testing (NDT).



NON DESTRUCTIBLE TESTING AND INSPECTION SERVICES

We specialize in Special Surveys, Class renewal surveys, Non-Destructive Testing and the recording of Cracks to underwater structures, Laminations, various indications found in welding, castings and steel plates. All our reporting is colour coded and easily understandable. We also carry out close-up photo reports to give a better idea of the condition of your structure, vessel as well as a proposed steel renewal to accurately assess the number of repairs to be taken out before the repairs.



SALVAGE

Today GMC is known in South Africa as a reliable, cost effective and innovative salvage/rapid response company. GMC's emergency response to crises has been extremely successful and we're active in the country and abroad. Over the years, our reputation has gained local support in many areas and we've developed relationships with some international salvage contractors.

Our success in these fields has been earned from the combined experience of our engineers, salvage master, divers, marine staff and strong business network.

We offer a variety of salvage services including: Marine Emergency Response; Wreck; Removal; Refloating; Hydrography Surveys; Environmental Care / Pollution Control; Diving Services; Underwater Bunker / Cargo Removal; Underwater Survey / Video Inspection; Underwater Demolitions; Ships Husbandry to name a few.



ENGINEERING SERVICES

Our engineering services incorporating specialist design and fabrication skills, we constantly develop customized plant and equipment which is essential for the successful implementation of the challenging construction solutions we are known for.

Our specialist equipment is developed in house in collaboration with experienced engineers, designers, fabricators, divers and marine personnel. This equipment is at the heart of our capability, as it allows techniques to be implemented in the execution of projects which would be impossible with standard equipment. Our plant department has a workshop which is dedicated to the fabrication of custom-built equipment. This is supplemented by outsourcing fabrication and engineering work to nearby shipyards and specialist machine shops.

Our staff have experience in the design, construction and customization of equipment.



DIRECTORS' STORY

The founder of Guerrini Marine Construction Diving and Salvage in 1995 and CEO, Adrian Guerrini, started off as a SA Navy diver, progressed to Supervisor's commercial diving and Civil engineer.

On inception, Adrian has worked in both the commercial diving sector as well as the Civil sector in an operational capacity where he realized that divers and civil engineers clash.

Combining his skills, Adrian believed he could grasp the challenges associated with both sectors and create a synergy for both the diver and the engineer.

Adrian has been personally involved in all commercial diving projects involving salvage, rapid response, repairs and various marine operations.

His knowledge and first-hand skills in those specialized operations have created his legacy with a flawless track record.

GMC's Technical Director is also the Chief Civil Engineer and General Manager with PR Civil Engineer under his belt, he represents the company at organizations like SAFCEC, SAICE and ECSA and is qualified as a commercial diving supervisor.

Rob is currently heading the Civil Engineering department in GMC, which originated in 1998 when the client's needs became much orientated in marine civil engineering such as excavation, foundations, reinforced concrete structures, grading, erosion control, etc. and has headed various civil projects including the construction of suspension bridges, storm sea water damage control and harbor reconstruction projects. Very field man orientated, Rob ensures that client's requirements are met at all-times especially in their engineering areas that are often inaccessible by the client.

GMC PERSONNEL

GMC believes that the most important asset in the business is the personnel. All GMC personnel have not only the South African Department of labor and IMCA accreditation but also international Qualifications with a proven excellent track record qualified in marine and offshore operations. All Our diving related personnel are IMCA qualified; all our services comply with the ISO 9001/2008 DNV specifications. And are IMCA complying.



PLANT, VEHICLE AND EQUIPMENT INVENTORY

TRUCKS

FAW double axle crane truck 20V01026 CY156346	1
Volvo Horse and Low Bed Trailer	1
Toyota Dyna 7-145 4.5 tonne CY16719	1
Toyota Dyna 4.5 Tonne CA22587	1
FAW 18m3 4 Wheel Steer Tipper	1
FAW 18m3 4 Wheel Steer Tipper	1

PLANT

2006 Cat 725ADT 30 Tonne Excavator	1
Doosan 22 Tonne Excavator with Hammer Piping & Coupler	1
Dieci-runner 35.12 Tele handler	1
Dieci-Pegasus 35.16 Tele handler	1
Catapiller Dumper 20 Tonne	1
CTC Plant Excavator Hammer	1
CTC 14 M extended Excavator boom	1
CASE TLB	1

MARINE CRAFT

19.68M 75.94T TUG STRANDLOPER 351531 EX PORTNET	1
11M DIVE SUPPORT VESSEL GEE EM SEA1 DTC 8173C	1
8M RIB DIVE SUPPORT AND SURVEY GEE EM SEA 2 DTD 1722 B	1
27.45M X 7.65 BARGE - TRANSPORT / DREDGING DTC 8985	1

CRANES

NIPPON DH400 50 TONNE CRAWLER CRANE	1
NIPPON DH500 50 TONNE CRWLER CRANE	1
HITACHI KH180 50 TONNE CRAWLER CRANE	1

PLANT, MACHINERY, DIVING EQUIPMENT

Mixer	1
Compressor Atlas Copco CA762336	1
Crane Kimtrac	1
4 Dive Stations	1
Lathe	1
Dredge Hoses 6" 80m	1
Dredge Hoses 8" 80m	1
Hydraulic Power Pack	1
Hydraulic Tools	1

Generator 3 phase	1
Tractor Trailer Hydraulic	1
Brocco Cutting Tools	1
Yamaha 50 HP Outboard	1
Fast lift	1
Hyjack cape - core drill	1
Gravel pump Pcf-8	1
Unique hydra-jw lift bag	1
Cement mixer 300l	1
Nine metre buccanner trailer	1
Hyjack hand drill	1
Dive action camera dx-1200hd	1
IH breaker accessories	1
Wagner compressor	1
Circular saw	1
Deep sea diver portvideo	1
Seatronics 786 divers equipment	1
Band mask	1
Ian Dickie Auto PRME Pump	1
Underwater lift bags X2 2000LB	1
Spazatainer 6m used Container	1
Parow Bolt Plasma cutter	1
Mactool Husquavarna Drill	1
Unique Hydra Amcon Unit	1
Allen Instruments-24651Total Station	1
Container World-C13385 6m container	1
M&G Auto-2792Diesel Compressor10HP	1
Unique Hyd-608Amcom111Diver rack Dur	1
Dynamic Ent-5501 Hand Drill	1
Unique Hydra-817Umbilical 75mts	1
Unique Hydra-817Camera 11494/5	1
Caledonian-80498010 16mm Drill	1
Fowkes-N22114Welder Mig Inverter	1
Unique Hydra-1126-Underwater dive ki	1
Portable Hand Pump-Unique	1
Dry Suit-Alpha Dive	1
PCF Pump 12"	1
Ian Dickie HP Washer	1
Master Track Underwater Grinder	1
Master Track 20m & 15m Transmission Hose	1
Ideal Agencies 220V KVA Petrol Generator	1
Diesel Generator CES 6KVA	1
Diesel Generator CES 6KVA	1
Armada 12" cleaning brushes	1
Hyjack hand drill & accessories	1
Buckasa 8KVA Diesel Generator	1
Avlock Collar Splitter	1
Atlas Copco Deutz Diesel Compressor	1

L van Wyk Diving ADT	1
Armada 12" Underwater cleaning brush set	1
CES-Mag drill 720W32MM	1
Demolition R tex Breaker/Rockdrill/Moil	1
Dry Suit	1
Northmec-Digger Loader	1
ACME Industries Dive Unit	1
Unique hydra Dive helmet KM37	1
Jeremy Dinkelmann-Lift bag 1 ton X2	1
ILS 10 ton scale	1
Hyjack CP9 drill	1
Skidloaders Concrete Bucket	1
Mighty Brick Machines-Brick machine	1
Airpower 12V Air Comp Koala220V tank	1
Airpower-12V Air Comp Koala220V tank	1
Wemmerhoek-Kirby Morgan 37 Neck Ring	1
Turner Morris-4X Mixer Yanmar Diesel	1
Ideal Agencies-Petrol Generator	1
Dieci-Bucket light material	1
Andre Erasmus-Kirby Morgan 18 Bandit	1
Cilliers Markram - Petrol Pump	1
T Morris-Plate Compactor 90kg	1
Reynolds-Hitachi DH52ME Rotary Drill	1
Gripper&Co-pump	1
5x Sapphire Sports Watch	1
Fantastical Umbilicals	1
Ideal Agencies-220V 6.5KVA Petrol	1
Radio Holland Isat Phone	1
NanHua Machinery-Crawler Crane DH508-10	1
WH Auctioneers-Diesel bowser 2011	1
WH Auctioneers-Deutz Diesel Engine Water	1
WH Auctioneers-JCB G88 88KW Diesel Gen	1
WH AUCT-Dynapac CC122 double drum roller	1
WH Auctioneers-Concrete Mixer	1
WH Auctioneers-Concrete Mixer	1
WH Auctioneers-Komatsu 3ton Forklift	1
NAN Hua-Crawler Crane Boom	1
Damen-Submersible dredge Pump DOP15	1
Seaport Supply-Winch Radial 2Speed	1
Dosco-Add to power pack DOP150 pump	1
Entramarc-Centaflex Element powerpac	1
Dosco Sales-Add to power PackDop150 Pum	1
Dive Action-Set Special Aqua,Wetsuit	1
PCF Engineering-8 Hatz Diesel Engine	1
Deutz Diesel-Engine	1
Southern pumps-bareshaft Pump	1
Hyjack-Plug Hole Drill ST Helena	1
Drone	1

TRAILERS

Safari centre Vin aayt115m9hcv0105	1
Diving trailer	1
Trailer(ex Lesotho)CA796851 angola 2010 Flatdeck	1
Venter Sputnik 10 Traveller	1
Route Quest Sloper	1
Cilliers Makram-New Elec Compressor	1
Cilliers Dive Trailer	1
Venter-Traveller 10 Sputnik Brake	1
Cilliers Makram-New Build Dive	1
Venter Trailer CA 561070	1
ADAMO CA 720565 Wetbike Trailer	1
Talon Boat Trailer CY74235	1
Flat Bed Trailer CY67876	1

OFFICE AND STORAGE CONTAINERS

OFFICE	
STORAGE	6
	10

MOTOR VEHICLES

Renault Clio CA 497618	
Datsun Go	1
Toyota Landcruiser CY105642	1
Toyota-Landcruiser LG 2012	1
	1

LDV'S

Nissan NP 300	
Nissan NP 200 1.6 p/u s/c CA 270628	1
Nissan NP 200 1.6 p/u s/c CA246192	1
Nissan NP2001.6	1
Isuzu KB 250 CY13968	1
Isuzu KB 250 CY126217	1
Isuzu KB 250	1
Toyota Hilux 3.0D 4D Raider 4x4 CY 308069	1
Toyota Hilux D/cab 3.0 D-4D 4X4 A/T	1
Kia K2700 CA548020	1
Thorp-GWM Steed 5 S/C Diesel	1
Ford Ranger 2.2 TDCI-CY132016	1
Ford Ranger 2.2 TDCI-CY140395	1
Ford Ranger 2.2 TDCI	1
	1



CHIEF EXECUTIVE OFFICER



WBHO / STEFANUTTI STOCKS MARINE
JOINT VENTURE



To Whom it May Concern

11 March 2011

**RE: CAPE TOWN CONTAINER TERMINAL - BERTH DEEPENING & QUAY
REFURBISHMENT: GUERRINI MARINE CONSTRUCTION
Contract Number: H500206-CPC008**

We confirm that Guerrini Marine Construction are carrying out underwater construction activities and survey for us here at the Ben Schoeman Quay Refurbishment Project.

The value of their work is R18,627,027.44

Their work is on time and to specification and we have been more than satisfied with their performance.

Yours faithfully,

Tim Cooper
Project Manager



Linking People
Promoting Growth

TRANSPORT
WATER
ENERGY AND RESOURCES
BUILDINGS AND STRUCTURES
ENVIRONMENTAL
PROJECT AND CONSTRUCTION MANAGEMENT

Botswana
Kenya
Mozambique
Zimbabwe
South Africa
Johannesburg
Bloemfontein
Bedfordview
Cape Town
Durban
East London
George
Kimberly
Kingsley
Ladysmith
Mafikeng
Mossel Bay
Nelspruit
Newcastle
Pietermaritzburg
Polokwane
Port Elizabeth
Port Shepstone
Pretoria
Queenstown
Richards Bay

11 March 2011

Our Reference: T00.PZB.0000026/CON/COM

TO WHOM IT MAY CONCERN

Dear Sir

**CONTRACT NO RD/FB-1/2009: CONSTRUCTION OF THE AUPLASI/HA MOFUTHO
SUSPENSION FOOTBRIDGE - LESOTHO
LETTER OF REFERENCE**

We hereby confirm that GMC/Kaze Construction Joint Venture was awarded the contract for the construction of the above mentioned project on 15 February 2010, with a contract period of six months and a contract award value of R 7 994 822.00.

The contract was successfully completed on 14 December 2011. Extension of time was granted for delays that had occurred during the contract period and these extensions were dealt with in terms of the General Conditions of Contract. The contract was completed within the budget and to the required quality. The dealings between the Engineer/Resident Engineer and the Contractor were conducted in a professional manner and there was a good working relationship between all parties involved in the project.

A number of claims arose on the project and these were motivated and dealt with in terms of the General Conditions of Contract and were all resolved during the contract period.

The tender document called for the contractor to go into joint venture with a local Lesotho contractor and that is the reason that Kaze Construction was a joint venture partner on this project. The joint venture was well managed by GMC.

This project was carried out under very difficult conditions as the site was situated in a remote part of Lesotho with difficult access to the site and all materials had to be imported from South Africa with some critical items having to be imported from Canada.

Yours faithfully
for SSI

Mervyn Bosworth-Smith
Principal

T:\T00 PZB\0000026 HA Mofutho Footbridge\6 - CONST. B - CON - Construction\01 - COM - Correspondence\Dir\11-01-11 GMC - Letter of reference.docx

SSI Engineers and Environmental Consultants (Pty) Ltd., trading as "SSI" Reg No. 1966/001916/07
Victoria Country Club Estate 30 Montrose Park Boulevard Montrose Pietermaritzburg
PO Box 1066 Pietermaritzburg 3200 South Africa
Telephone +27 33 328 1000 Facsimile +27 33 328 1006 Email pietermaritzburgtrans@ssi.co.za

www.ssi-dhv.com

Directors

N Bhojaram | B van Ee (Dutch) | V Prins | V Johannessen (Norwegian) | S P Kotlde | B Sibisi



Port Elizabeth
Lion Roars Office Park
Cnr Heugh Road & 3rd Ave
Walmer 6070

T +27 41 503 3900
F +27 86 600 4037
E portelizabeth@af.aurecongroup.com
W aurecongroup.com

PO Box 5328
Walmer 6065
Port Elizabeth
South Africa

aurecon

105356/COR/CBR/cl

14 March 2011

TO WHOM IT MAY CONCERN

**SANPARKS BIRD ISLAND: JETTY UPGRADING AND CONSTRUCTION OF BOATHOUSE :
GUERRINI MARINE CONSTRUCTION cc**

During 2008/2009, severe storms along the Eastern Cape Seaboard caused extensive damage to a landing jetty and other infrastructure on Bird Island, approximately 8km off the mainland coast and 80km from Port Elizabeth. In 2009 Aurecon Consulting Engineers were appointed by SANPARKS to design and supervise the repairs to the jetty, construct a new boathouse and install a slewing jib hoist and rail line to enable small marine craft (up to 5ton) to be lifted out of the water and transported into the boathouse on the island.

In 2010, Messrs Guerrini Marine Construction (GMC) were duly appointed to carry out the Civil and Marine work on the project.

The overall value of the project at tender stage was R6.9 million. Messrs GMC performed well on the project and completed the work timeously and well within budget. There were a number of changes and additions to the scope of the works during the project which were all completed without any problems. The final contract value was R7.1 million which included some significant saving resulting from good communication and construction methods used by this experienced marine Contractor, who was always willing to make constructive suggestions gained from his contracting experience.

We would recommend this Contractor for any future marine work.

Yours faithfully
AURECON



C B.ROBERTS PrEng
Technical Director

----- Original Message -----

From: Derek.Visser@transnet.net

To: Victor.Best@transnet.net

Cc: adrian@gmcdiving.co.za

Sent: Friday, March 11, 2011 4:49 PM

Subject: RECOMENDATION OF GUERRINE MARINE CONSTRUCTION

To Whom it may Concern

I have been asked by Adrian to supply information of the 3 TNPA projects that GMC have undertaken in the Port of Cape Town.

1. Salvage of two derelict fishing vessels. These vessels had sunk at their moorings and were on the bottom for a few years. The contract required that the vessels had to be refloated and the vessels and cut up into scrap. I drew up the specifications but did not project manage the contract. The methodology adopted was to plug up all the holes and pump compressed air into the holds to float the vessels. The work was complex and successfully completed.
2. Cleaning and repairs to the Sturrock Dry Dock emergency groove. I drew up the specification and project managed this work and was quite complex. This work was completed and sealed.
3. CTCT scour protection. GMC has been working as a subcontractor to the main contractor WBHO/SS who are constructing a new quay wall in front of the existing quay wall. The scour protection involves the placing of geo-textile bags and cement grouting into the bags. GMC has been involved in this project for the last 2 years and will continue until completion in April 2013.

My recommendation is that you should consider GMC tender on the basis that they have completed these project, but more important to me is that they undertake all their work in accordance with the diving regulation as contained in the OSHE act.

Should you have any questions please contact me.

Regards

Derek